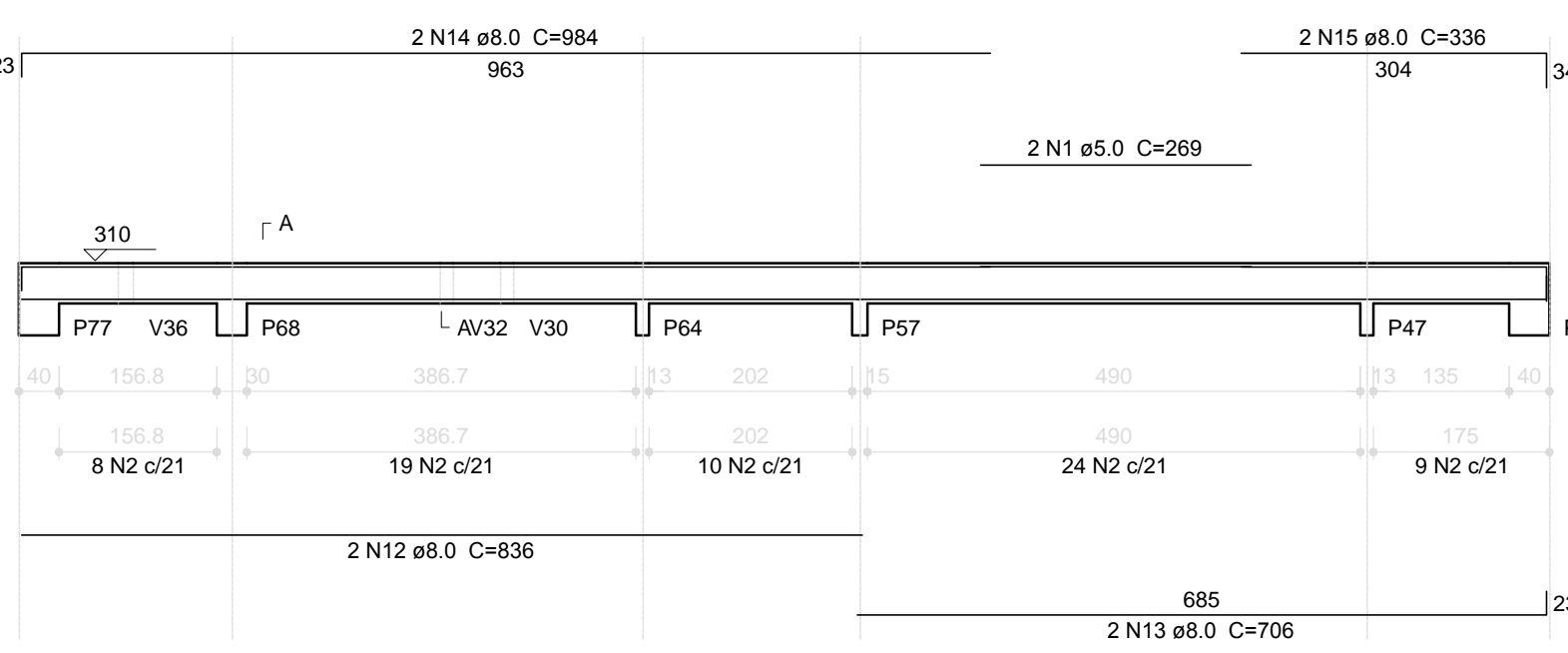


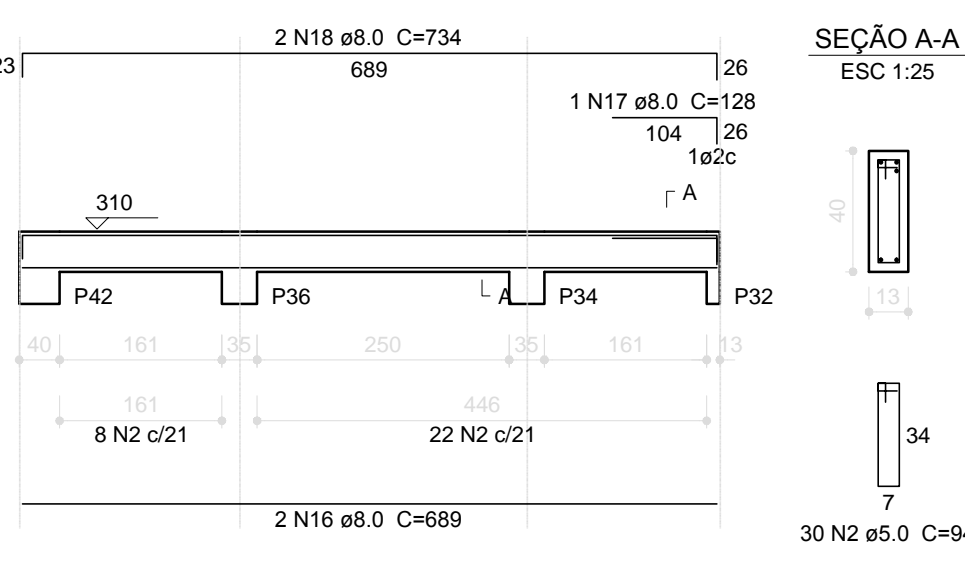
V61

ESC 1:75



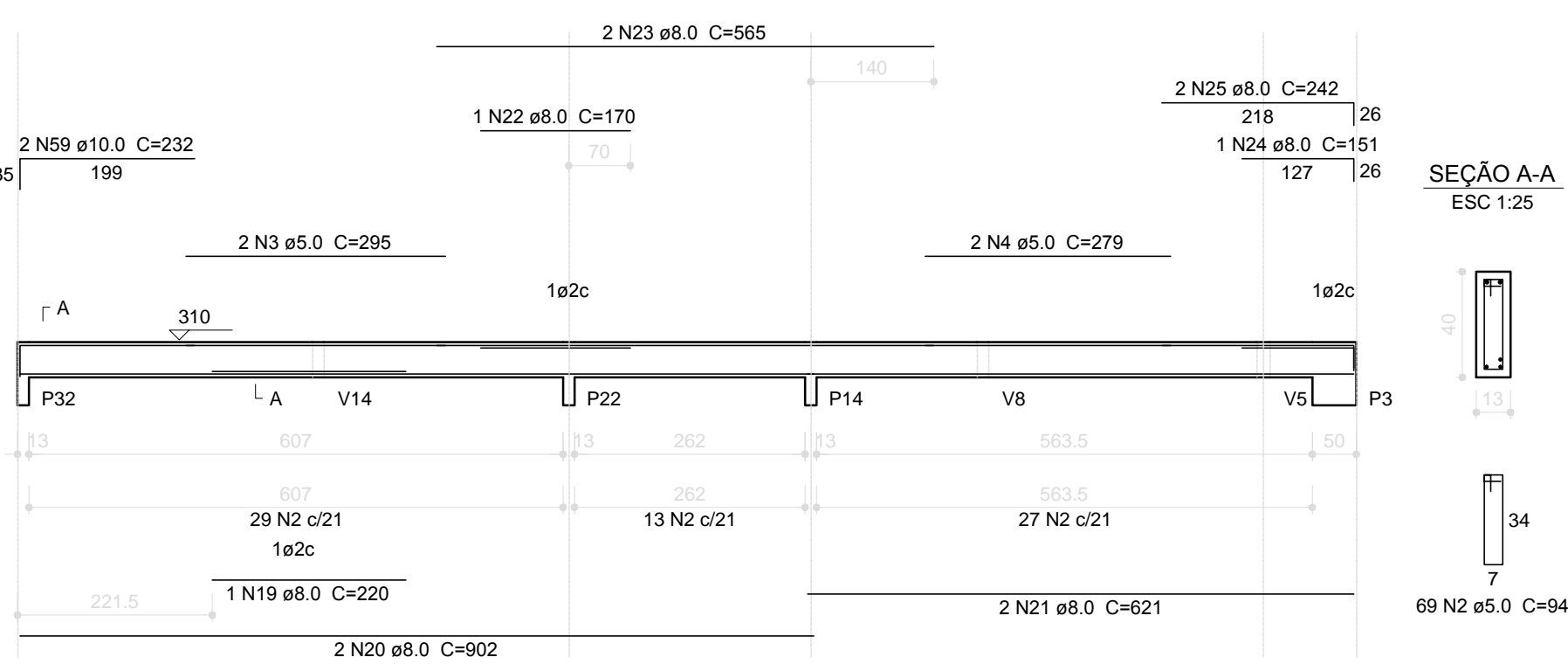
V62

ESC 1:75



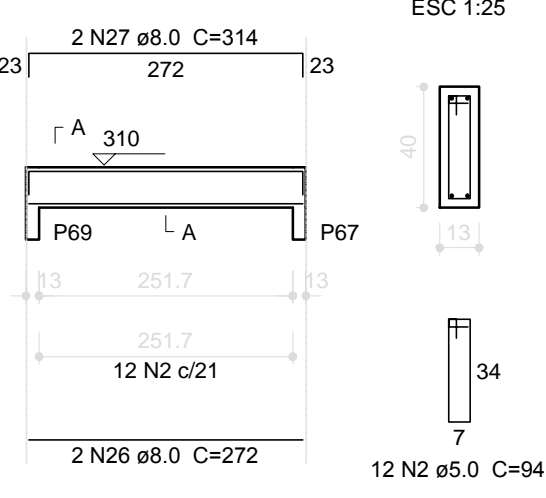
V63

ESC 1:75



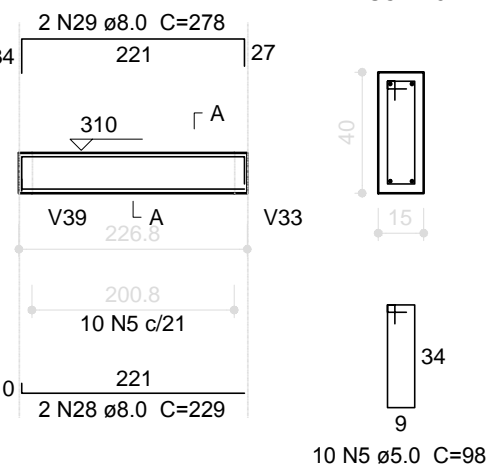
V66

ESC 1:75



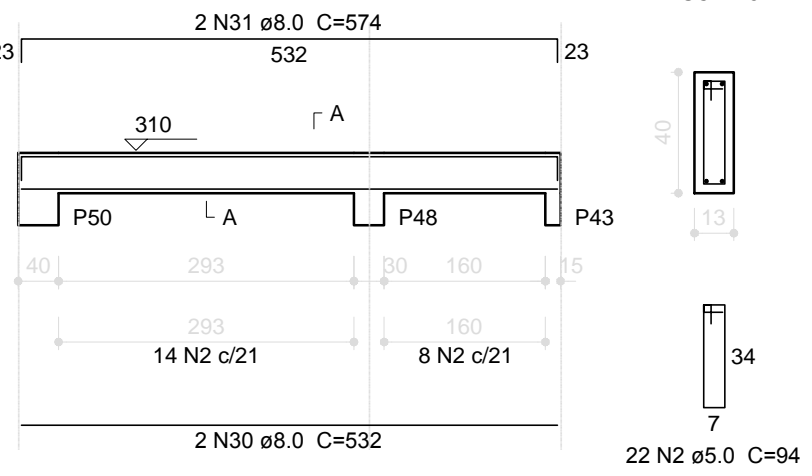
V67

ESC 1:75



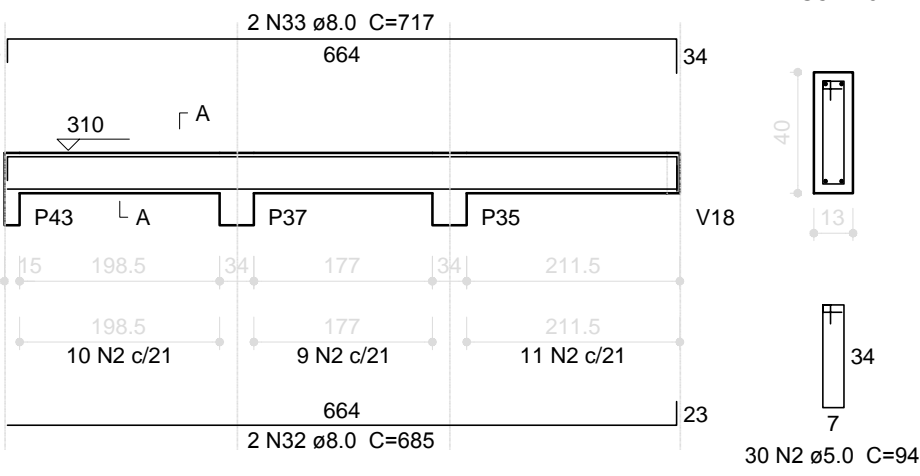
V68

ESC 1:75



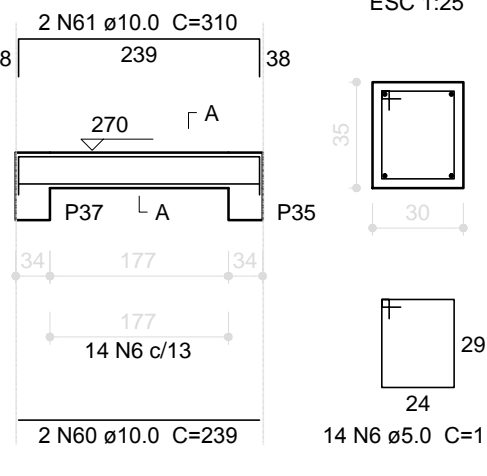
V69

ESC 1:75



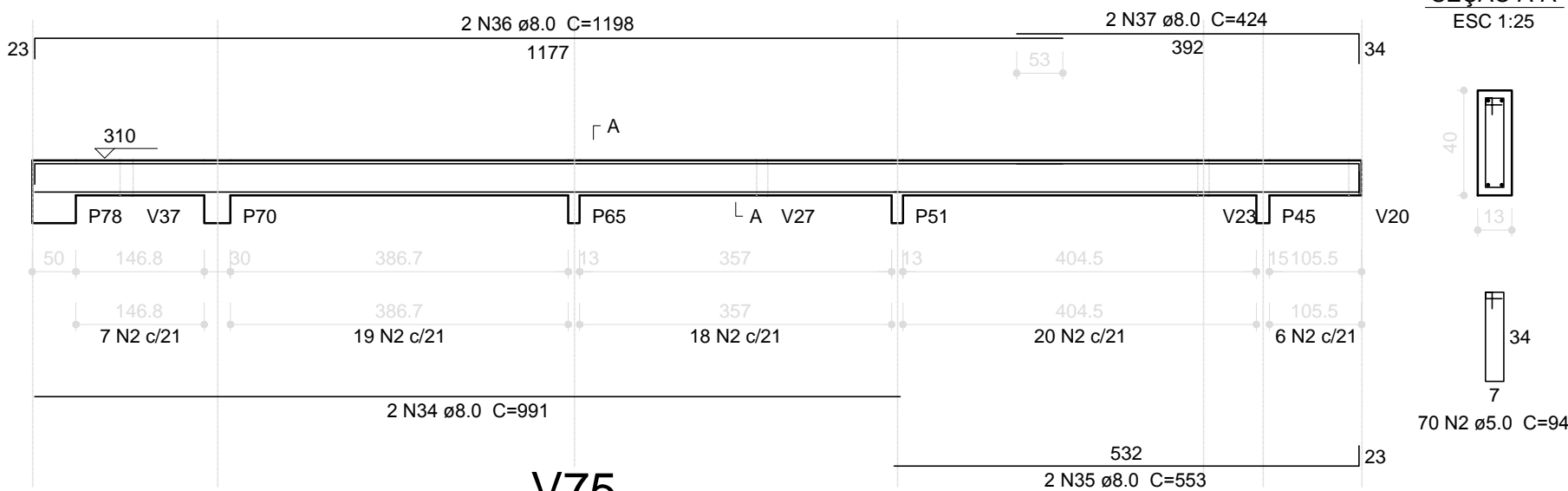
V70

ESC 1:75



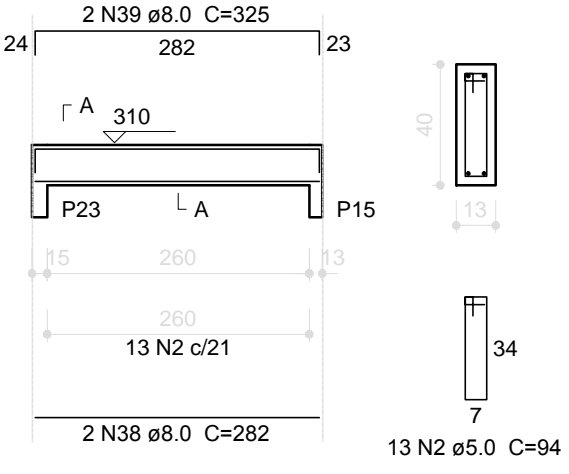
V71

ESC 1:75



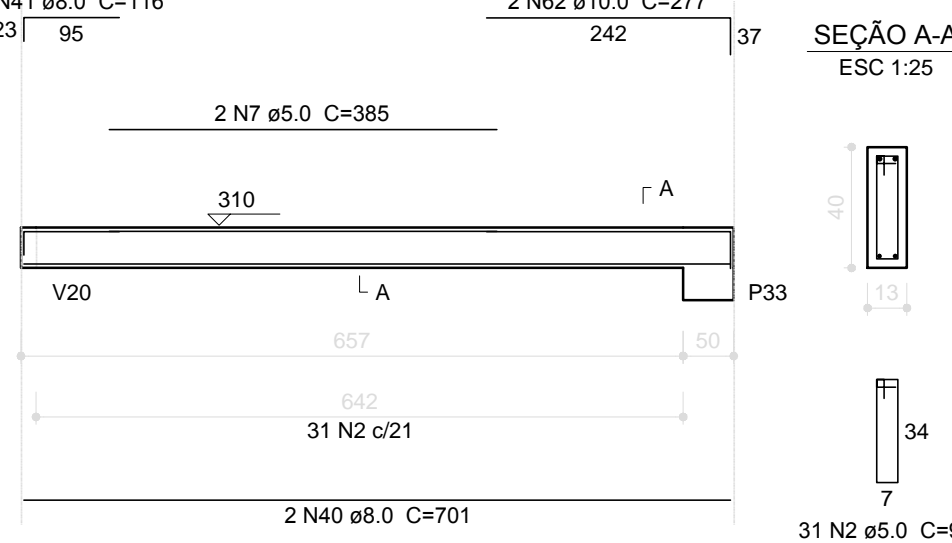
V76

ESC 1:75



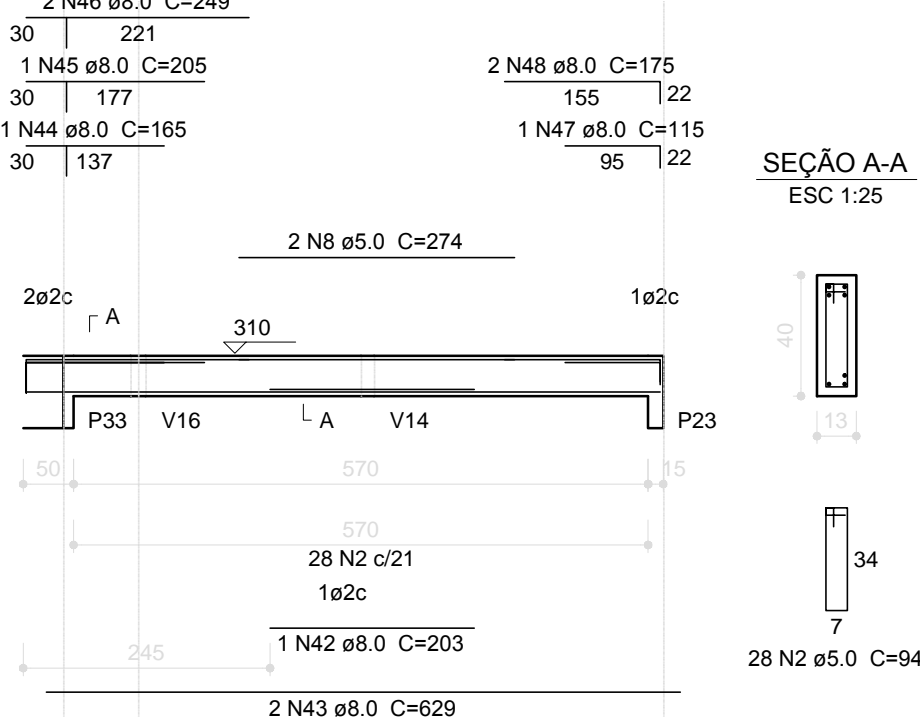
V72

ESC 1:75



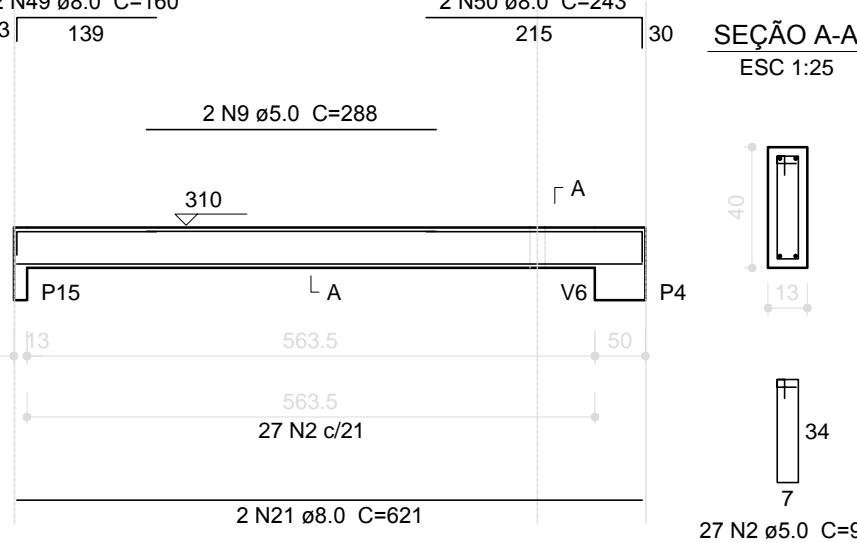
V73

ESC 1:75



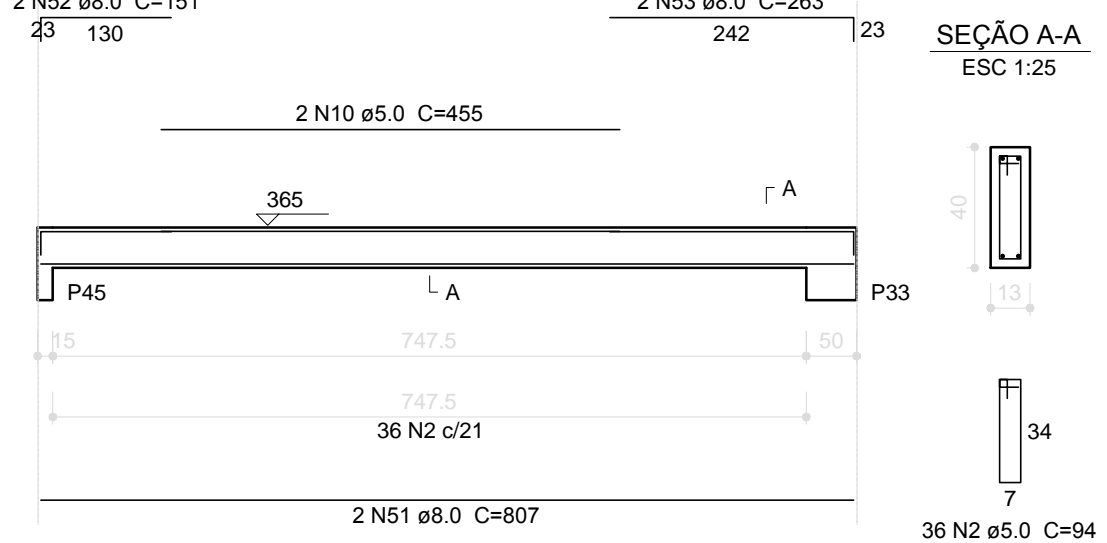
V74

ESC 1:75



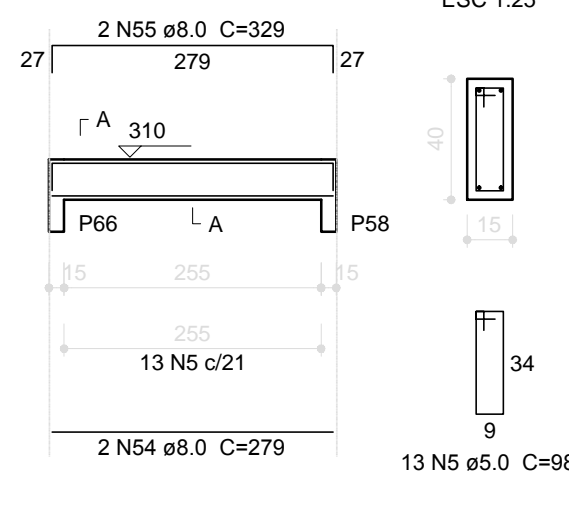
V75

ESC 1:75



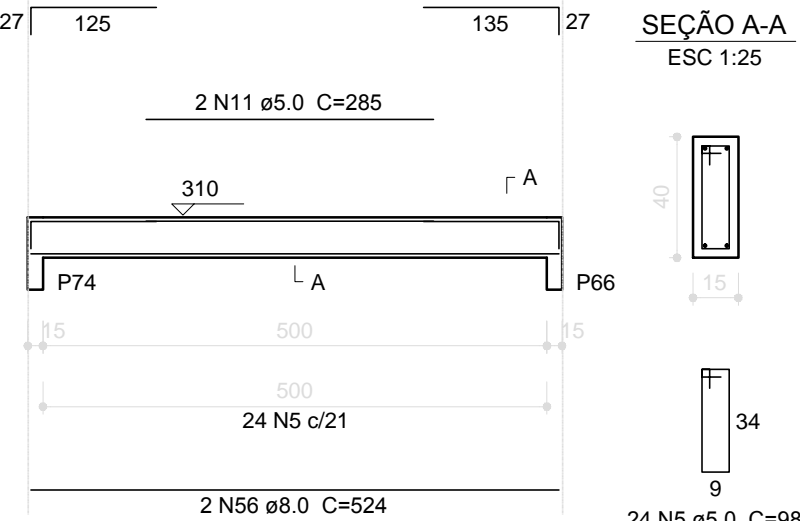
V81

ESC 1:75



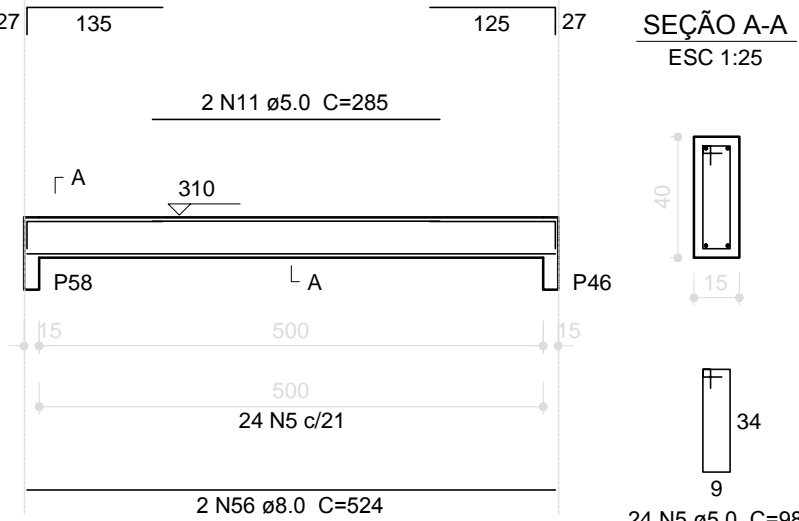
V77

ESC 1:75



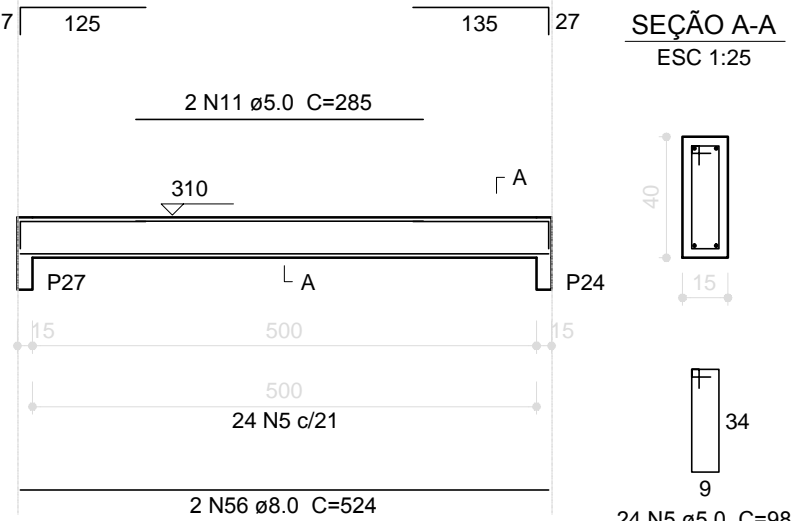
V78

ESC 1:75



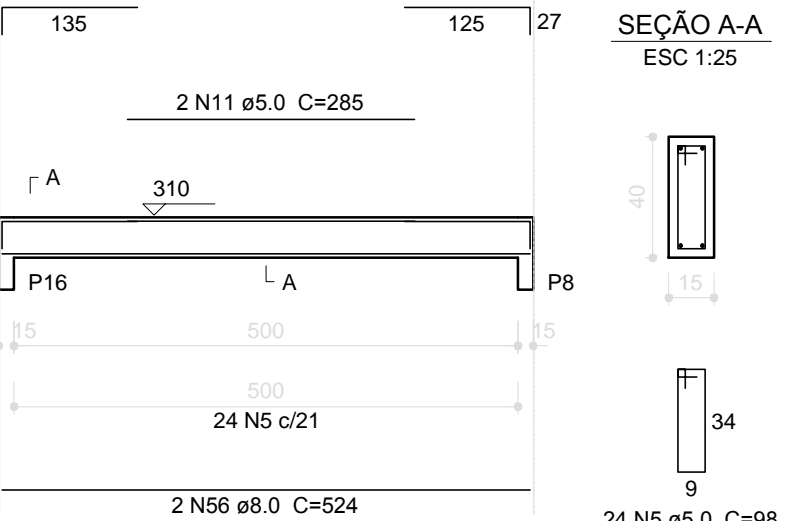
V79

ESC 1:75



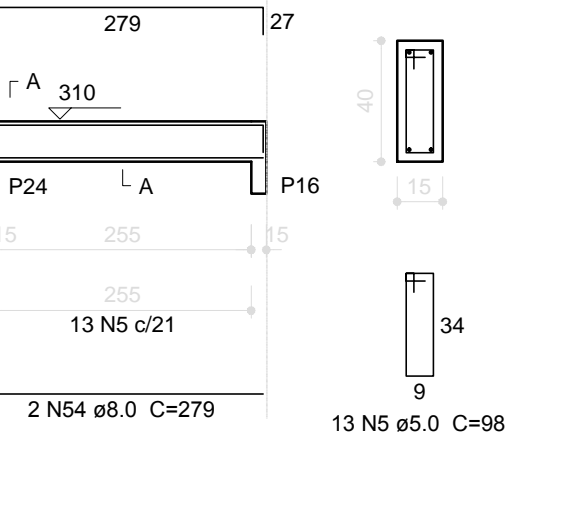
V80

ESC 1:75



V82

ESC 1:75



Relação do aço

V61	V62	V63
V66	V67	V68
V69	V70	V71
V72	V73	V74
V75	V76	V77
V78	V79	V80
V81	V82	

Resumo do aço

ACO	DIAM (mm)	C.TOTAL (m)	PESO + 10 % (kg)
CA50	8.0	466.7	202.6
CA60	10.0	21.2	14.4
CA60	5.0	625.3	106
PESO TOTAL (kg)			
CA50	216.9		
CA60	106		

Volume de concreto (C-25) = 7.11 m³  
Área de forma = 121.43 m²



PROJETO PADRÃO - FNDE

PROPRIETÁRIO: : PREFEITURA MUNICIPAL DE PELOTAS

ENDEREÇO: EMEI LARANJAL - EMEI NAVEGANTES - EMEI VASCO PIRES

MUNICÍPIO - UF: PELOTAS - RS

PROPRIETÁRIO

RESP. TÉCNICO CREA

AUTOR DO PROJETO CAU

DLFO

CREA

RA

ENDEREÇOS PROJETO TIPO 2 :

EMEI LARANJAL - PRAÇA NOVA PALMA, 48

EMEI NAVEGANTES - PASSEIO DOIS, S/ N°

EMEI VASCO PIRES - RUA FAGUNDES VARELA, 874

OBSERVAÇÕES:

PROJETO EXECUTIVO

PROGRAMA PROINFÂNCIA - PROJETO TIPO 2  
PROJETO DE ESTRUTURA

COORDENAÇÃO CGEST - Coordenação Geral de Infraestrutura Educacional	VIGAS NÍVEL 310	SCV
REVISÃO R.00	ESCALA 1/75 DATA EMISSÃO JUNHO/2015	PRANCHA 14/14
FORMATO A1 (594x841)		